

Port Huron Federal
Building & CourthouseSchoolcraft Business
ParkOne Northwestern
Plaza

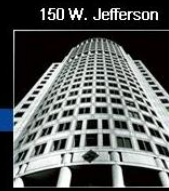
Fisher Building



One Detroit Center



Grand Park Centre



150 W. Jefferson



Trico Technology Center

AWARD WINNERS
The Office Building of the Year

Entry submissions at the **local level only** require that you participate in a Building Inspection, a **REVIEW & INTERVIEW**, of your property. A panel of local judges will judge your level of property management in several categories: physical attractiveness inside and out, security and safety, front office operations, engineering operations, and tenant amenities (refer to the Building Inspection Form for full details.)

TOBY Portfolios do not need to be completed for the *local entry*. If you win at the local level and wish to enter competition at the *Regional & International Levels*, portfolios must then be submitted online. More information will be forwarded as it becomes available from BOMA International. Local TOBY Award winners will be announced and presented at the BOMA of Metro Detroit's 2010 Awards Luncheon Presentation and Happy Hour Reception, October 22, 2010 at the Greektown Casino Hotel

**LOCAL LEVEL
Entry Fee:**
\$250

(onsite property company must be a Principal or individual associate BOMA member; non-member participation welcome, BOMA membership fees may be applicable.)

NEW THIS YEAR— All TOBY submissions must be benchmarked with Energystar®, provide a copy of the current year Statement of Energy Performance, and share the data with BOMA International on Energystar® Portfolio Manager. If you are already benchmarked, you may go back and choose to share data.
ALL INFORMATION IS HELD IN STRICTEST CONFIDENCE.

TOBY Winners
Are the Best of the Best
in Office Management...
Are You Ready to
Showoff Your Shine?

JUDGING: September 21-22-23, 2010

Judging typically lasts 2 hours. You will want to provide an agenda based on the Building Inspection Form available from the BOMA of Metro Detroit office.

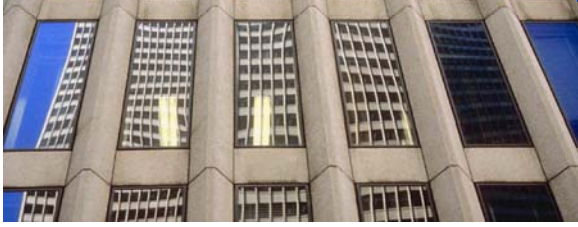
REGIONAL TOBY Portfolio: The 2010-2011 cycle will be submitted electronically. Those interested in Regional competition should attend the training session that will be scheduled for early August and enjoy the benefit of past experience.

REGIONAL Level Entry Fee: \$275 (+ \$25 for data submission)

Deadline for entry for the LOCAL LEVEL: August 20, 2010

Additional information for entry requirements may be found at www.bomadet.org

CALL FOR ENTRIES



Intent to Enter Deadline is Friday, August 20, 2010

___ Yes, I plan to submit an entry in the following category for the 2010-2011 TOBY Awards and will forward my entry fee of \$250 to BOMA-Detroit.

TOBY Entry Category _____

Name of Building _____

Building Owner _____

Building Architect _____

Address _____

Property Manager/Contact Name _____

Management Company _____

Phone _____

email _____

Forward Intent to Enter, payment & any questions to:

BOMA of Metro Detroit
38800 Country Club Drive
Farmington Hills, MI 48331
ph (248) 848-3714 or fax (248) 848-3744
email info@bomadef.org

**Awards may be presented
in the following categories:**

Under 100,000 Square Feet

100,000 - 249,999 Square Feet

250,000 - 499,999 Square Feet

500,000 – 1 Million Square Feet

Over 1 Million Square Feet

Renovated Building

Historical Building

Corporate Facility

Medical Office Building

Government Building

Suburban Office Park
Low-Rise (1-5 stories)

Suburban Office Park
High-Rise (6-10 stories)

Industrial Office Park

Earth

If you are considering entering and would like a TOBY mentor, please contact the BOMA office.

Thank you & Good Luck!

2010 TOBY/Awards Committee

Eric Kasaba, Chair

Sharon Carruthers, Vice Chair